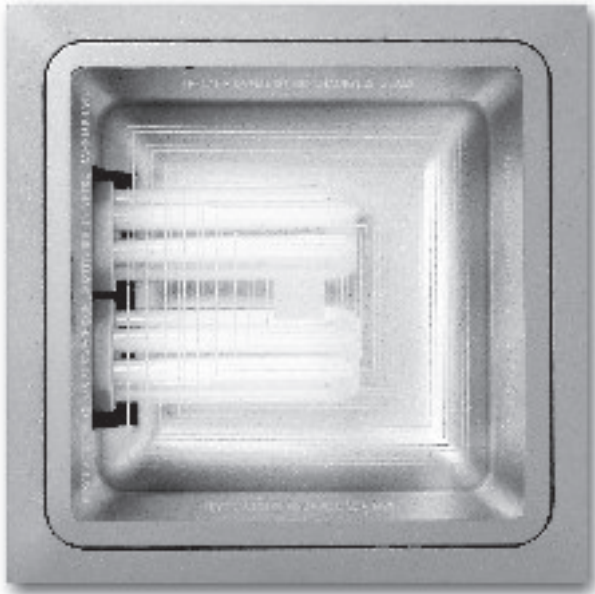


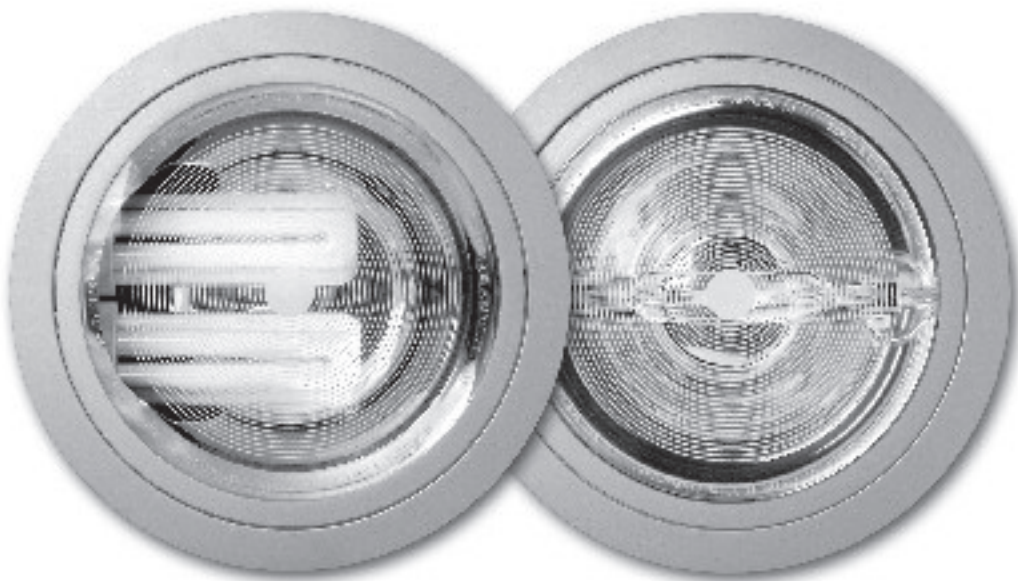
GALAXIS



GALAXIS



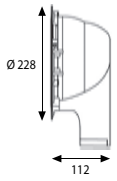
- ① Incassi a forma tonda (Galaxis-Round) o quadra (Galaxis-Square) per lampade fluorescenti compatte, joduri metallici ed alogene. Per controsoffitti spessore massimo 25mm. Telaio ed anello in pressofusione di alluminio, riflettori in alluminio anodizzato e vetro temperato di chiusura vano ottico. Accessori elettrici da ordinare separatamente. Vedi pag. 5/17
- ⓖ Downlights Round (Galaxis-Round) or square (Galaxis-Square) for fluorescent compact lamps, metal halide and halogen. For false-ceiling thickness up to max 25 mm. Frame and ring in die-cast aluminium, reflectors in anodized Aluminium and tempered closing glass. Electrical accessories to be ordered separately. See Pag. 5/17
- Ⓔ Aparatos de empotrar redondos (Galaxis-Round) o cuadrados (Galaxis-square) para lámparas fluorescentes compactas, de halógenos metálicos y halógenas. Para falsos techos de espesor max 25 mm. Marco y anillo en aluminio fundido a presión, reflectores en aluminio anodizado y vidrio templado de cierre para vano óptico. Accesorios eléctricos por separado. Ver pag. 5/17
- Ⓕ Appareils à encastrement de forme ronde (Galaxis-Round) ou carrée (Galaxis-square) pour lampes fluorescentes compactes, iodures métalliques et halogènes. Pour faux-plafonds épaisseur max 25mm. Cadre et anneau en aluminium moulé sous pression, réflecteurs en aluminium anodisé et verre tempéré de fermeture du boîtier optique. Accessoires électriques à commander séparément. Voir page 5/17
- Ⓟ Downlight Redondo (Galaxis -Round) ou quadrado (Galaxis-Square), para lâmpadas fluorescentes compactas, iodetos metálicos e halogénio. Espessura máx. de 25mm do tecto falso. Aro em liga de alumínio, reflector em alumínio anodizado e vidro de fecho temperado. Acessórios eléctricos a fornecer separadamente. Ver pág. 5/17
- Ⓓ Einbauleuchten rund (Galaxis-Round) oder quadratisch (Galaxis-Square) für Kompaktleuchtstofflampen, Halogen-Metaldampflampen und Halogen-Glühlampen. Für Zwischendecken bis zu 25 mm Stärke. Rahmen und Ring in Aluminium-Druckguss, Reflektor aus eloxiertem Aluminium und Glasabschluss aus temperiertem Glas. Elektrisches Zubehör siehe Seite 5/17



GALAXIS



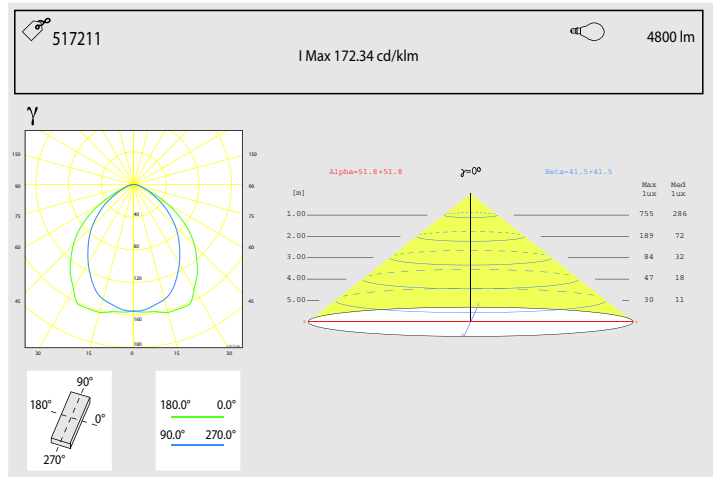
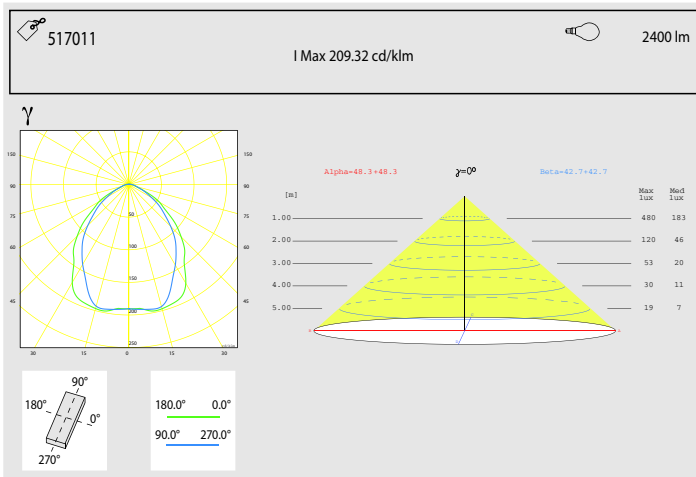
GALAXIS - ROUND EL



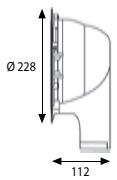
Ø 214 mm



515411	1x13 FSQ	G24q1	○	1.03
515511	1x18 FSQ	G24q2	○	1.03
515611	1x26 FSQ	G24q3	○	1.03
515711	2x13 FSQ	G24q1	○	1.27
515811	2x18 FSQ	G24q2	○	1.27
515911	2x26 FSQ	G24q3	○	1.27
517011	1x32 FSM	GX24q3	○	1.03
517111	1x42 FSM	GX24q4	○	1.03
517211	2x32 FSM	GX24q3	○	1.27



GALAXIS - ROUND EL EM



Ø 214 mm

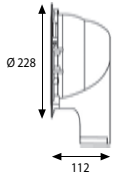


515711ELEM	2x13 FSQ	G24q1	○	1.27
515811ELEM	2x18 FSQ	G24q2	○	1.27
515911ELEM	2x26 FSQ	G24q3	○	1.27

GALAXIS



GALAXIS - ROUND EL

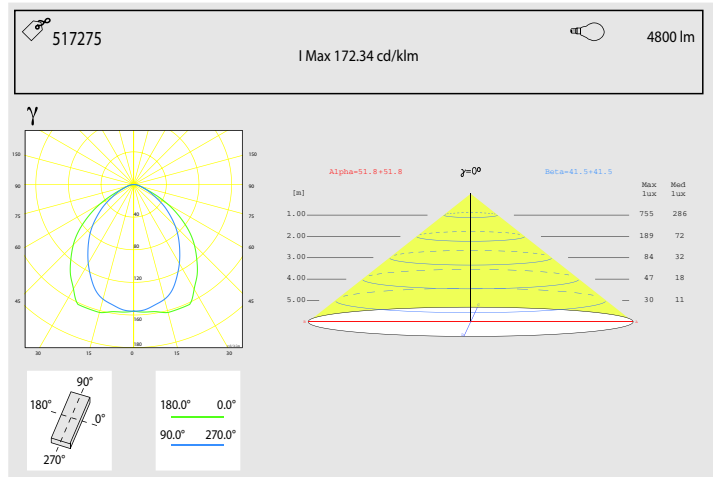
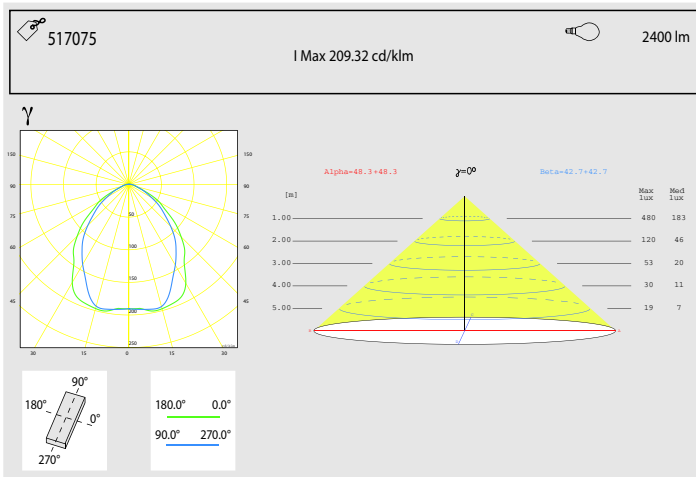


Ø 214 mm

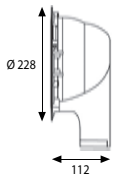
GR IP 44



556975	1x13 FSQ	G24q1	○	1.03
557075	1x18 FSQ	G24q2	○	1.03
557175	1x26 FSQ	G24q3	○	1.03
557275	2x13 FSQ	G24q1	○	1.27
557375	2x18 FSQ	G24q2	○	1.27
557475	2x26 FSQ	G24q3	○	1.27
517075	1x32 FSM	GX24q3	○	1.03
517175	1x42 FSM	GX24q4	○	1.03
517275	2x32 FSM	GX24q3	○	1.27



GALAXIS - ROUND EL EM



Ø 214 mm

GR IP 44

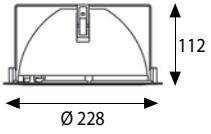


515751ELEM	2x13 FSQ	G24q1	○	1.27
515851ELEM	2x18 FSQ	G24q2	○	1.27
515951ELEM	2x26 FSQ	G24q3	○	1.27

GALAXIS



GALAXIS - ROUND MD

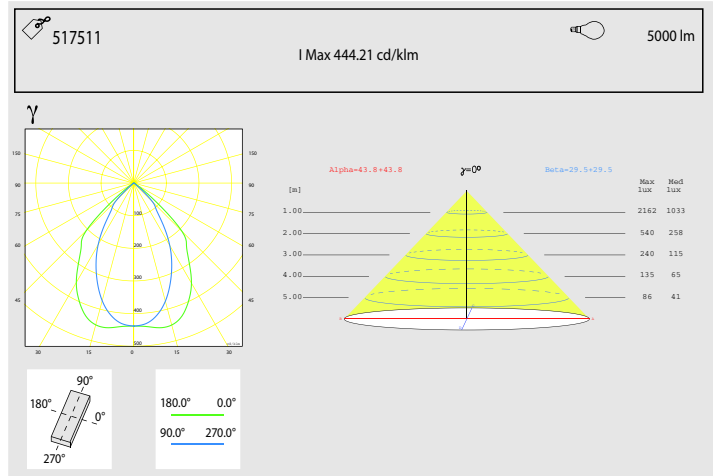
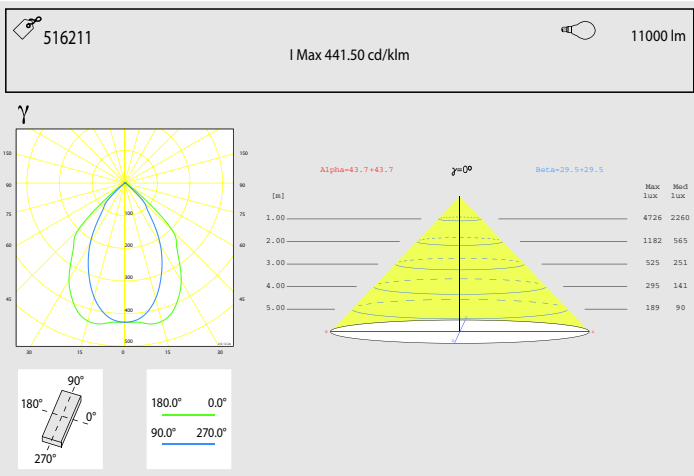


Ø 214 mm

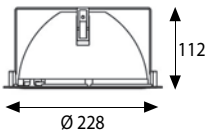
BI IP 44



517511	1x70 MD	Rx7s	<input type="radio"/>	1.08
516211	1x150 MD	Rx7s	<input type="radio"/>	1.08



GALAXIS - ROUND MD



Ø 214 mm

GR IP 44

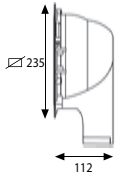


517575	1x70 MD	Rx7s	<input type="radio"/>	1.08
516275	1x150 MD	Rx7s	<input type="radio"/>	1.08

GALAXIS



GALAXIS - SQUARE EL



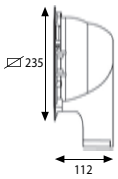
Ø 219x219 mm

BI IP 44



515421	1x13 FSQ	G24q1	○	1.29
515521	1x18 FSQ	G24q2	○	1.29
515621	1x26 FSQ	G24q3	○	1.29
515721	2x13 FSQ	G24q1	○	1.54
515821	2x18 FSQ	G24q2	○	1.54
515921	2x26 FSQ	G24q3	○	1.54
518311	1x32 FSM	GX24q3	○	1.29
518411	1x42 FSM	GX24q4	○	1.29
518511	2x32 FSM	GX24q3	○	1.54

GALAXIS - SQUARE EL EM



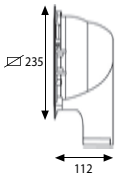
Ø 219x219 mm

BI IP 44



515721ELEM	2x13 FSQ	G24q1	○	1.54
515821ELEM	2x18 FSQ	G24q2	○	1.54
515921ELEM	2x26 FSQ	G24q3	○	1.54

GALAXIS - SQUARE EL



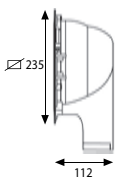
Ø 219x219 mm

GR IP 44



557575	1x13 FSQ	G24q1	○	1.29
557675	1x18 FSQ	G24q2	○	1.29
557775	1x26 FSQ	G24q3	○	1.29
557875	2x13 FSQ	G24q1	○	1.54
557975	2x18 FSQ	G24q2	○	1.54
558075	2x26 FSQ	G24q3	○	1.54
518375	1x32 FSM	GX24q3	○	1.29
518475	1x42 FSM	GX24q4	○	1.29
518575	2x32 FSM	GX24q3	○	1.54

GALAXIS - SQUARE EL EM



Ø 219x219 mm

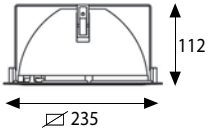
GR IP 44



515775ELEM	2x13 FSQ	G24q1	○	1.54
515875ELEM	2x18 FSQ	G24q2	○	1.54
515975ELEM	2x26 FSQ	G24q3	○	1.54

GALAXIS

GALAXIS - SQUARE MD



Ø 219x219 mm

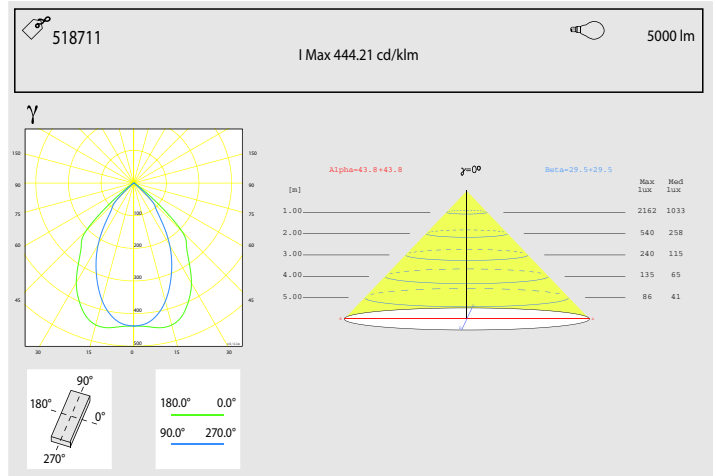
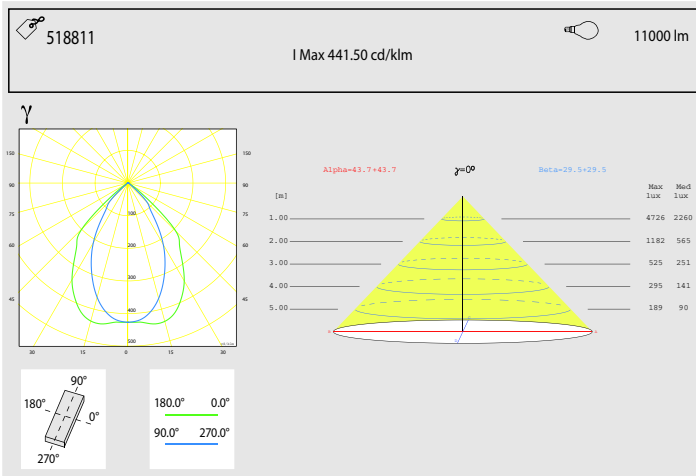
BI



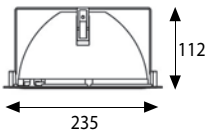
IP 44



518711	1x70 MD	Rx7s	<input type="radio"/>	1.08
518811	1x150 MD	Rx7s	<input type="radio"/>	1.08



GALAXIS - SQUARE MD



Ø 219x219 mm

GR



IP 44



518775	1x70 MD	Rx7s	<input type="radio"/>	1.08
518875	1x150 MD	Rx7s	<input type="radio"/>	1.08